

Beachcombers

Laura Feldman
Amy F. Bernon

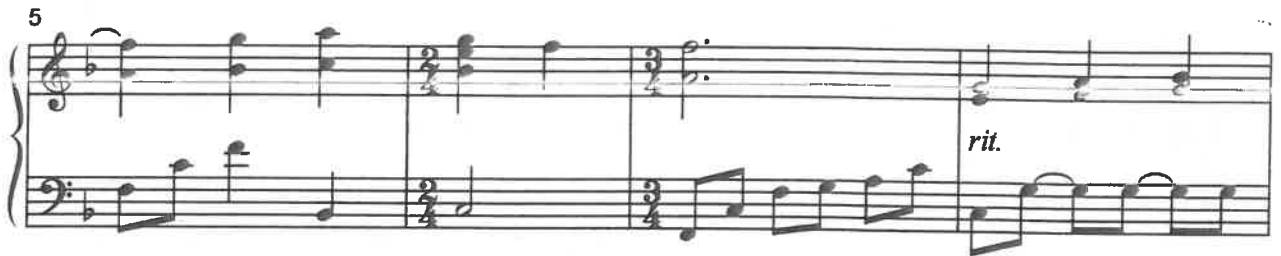
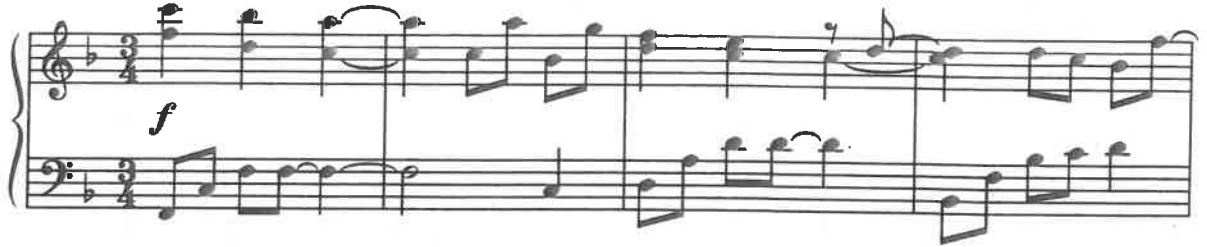
SSAB Chorus and Piano*

Amy F. Bernon

Ranges: Soprano I Soprano II Alto Baritone



① Flowing ♩ = 116



9 SI *mf a tempo*



Come with me to the sea

SII *mf a tempo*



Come with me to the sea

A *mf a tempo*



Come with me to the sea

B *mf a tempo*



Come with me to the sea



Duration: approx. 3:15

*Also available: SATB (15/2538H); Performance/Accompaniment CD (99/2410H).

© 2009 Heritage Music Press, a division of The Lorenz Corporation. All rights reserved. Printed in U.S.A.

Unauthorized reproduction of this publication is a criminal offense subject to prosecution.

THE CCLI LICENSE DOES NOT GRANT PERMISSION TO PHOTOCOPY THIS MUSIC.

www.lorenz.com

13

where the light, it flows, flows from the

where the light, it flows, flows from the

where the light, it flows, flows from the

where the light, it flows, flows from the

17

sky - blue sky, a lul - la-by. The

sky - blue sky, a lul - la-by. The

sky - blue sky, a lul - la-by.

sky - blue sky, a lul - la-by.

21

sea is a song of the shift - ing sand,
sea is a song of the shift - ing sand,
of your
of your

25

fa - ther's voice, your moth - er's hand,
fa - ther's voice, your moth - er's hand,

29

② *p*

guid - ing you back to shore. *p*

guid - ing you back to shore. *p*

guid - ing you back to shore. *p*

guid - ing you back to shore. *p*

(*mf*)

33

mf

Come with me *mf*

Come with me *mf*

Come with *mf*

Come with *mf*

Come with

37

and you'll see what treasures there are to
 and you'll see what 'treasures there are to
 me and you'll see treasures to
 me and you'll see treasures to

41

find, left behind by the tide, the
 find, left behind by the tide, the
 find, to find. by the
 find. by the

45

rush - ing tide. rush - ing tide. tide, rush - ing tide, tide. The sea is a song of the

49

mp Tra - v'ling soul, *cresc.*
mp Tra - v'ling soul, *cresc.*
 tra - v'ling soul, of the ships that have *cresc.*
 tra - v'ling soul, of the ships that have *cresc.*

52 *f*

gal - leon* gold, —

gal - leon* gold, —

sailed full of gal - leon* gold, —

sailed full of gal - leon* gold, —

55 3 *p accel.*

ship - wrecked up - on the shore.

ship - wrecked up - on the shore.

ship - wrecked up - on the shore.

ship - wrecked up - on the shore.

ship - wrecked up - on the shore.

p accel.

*galleon: in former times, a large, usually Spanish, sailing-ship.

Breathlessly and slightly faster ♩ = 126

f

Try to keep
Sand and sky,

Try to keep
Sand and sky,

f Try to keep up with me as we run a - long.
Sand and sky, wa - ter, wind, swirl - ing in the storm. *div.*

Try to keep up with me as we run a - long.
Sand and sky, wa - ter, wind, swirl - ing in the storm. *div.*

Breathlessly and slightly faster ♩ = 126

f

up with me as we run a - long,
wa - ter, wind, swirl - ing in the storm,

up with me as we run a - long,
wa - ter, wind, swirl - ing in the storm,

Try to keep up with me
Sand and sky, wa - ter, wind,

Try to keep up with me
Sand and sky, wa - ter, wind,

67

a the long, a long, storm, ris - ing

a the long, a long, storm, ris - ing

as we run a - long, a - long, swirl-ing in the ris - ing storm, ris - ing

as we run a - long, we run a - long, swirl-ing in the ris - ing storm, ris - ing

1st time

2nd time

71

storm, ris - ing, ris - ing, ris - ing

storm, ris - ing, ris - ing, ris - ing

storm, ris - ing, ris - ing, ris - ing

storm, ris - ing, ris - ing

cresc.

cresc.

cresc.

cresc.

4

75

ff

poco rit.

storm!

ff

poco rit.

storm!

ff

poco rit.

storm!

ff

poco rit.

storm!

ff

poco rit.

sub. p

Ad.

*

79

Tempo I

p

sea - glass,
sea - grass,

p

flot - sam,*
flot - sam,

p

Sea - shell,
Sea - swell,

p

jet - sam.*
jet - sam.

Tempo I

(p)

p.

p.

p.

p.

p.

*Flotsam (*flot-suhm*) and jetsam (*jet-suhm*) are a ship's debris washed ashore.

83

mf cresc.

5

soar - ing through the sap - phire sky!

mp cresc.

Sea - bird through the sap - phire sky!

mp cresc.

Sea - bird through the sap - phire sky!

mf cresc.

soar - ing through the sap - phire sky!

mp cresc.

88

rit.

Expansively
f a tempo

— Come with me, come — with me —

rit. *f a tempo*

— Come with me — to the sea —

rit. *f a tempo*

— Come with me, come — with me to the sea, to — the

rit. *f a tempo*

— Come with me — to the sea —

Expansively

rit. *f a tempo*

93

where the light, it flows, flows from the
 where the light, it flows, flows from the
 sea where the light, it flows, flows from the
 where the light, it flows, flows from the

97

sky - blue lul - la - by. The
 sky - blue sky, a lul - la - by. The
 sky - blue lul - la - by.
 sky - blue sky, a lul - la - by.

101

sea is a song of the shift - ing sand,
sea is a song of the shift - ing sand,
of your
of your

This musical system contains four staves. The top two staves are vocal lines with lyrics. The third staff is a treble clef staff with rests and a few notes at the end. The fourth staff is a bass clef staff with rests and a few notes at the end. Below these are piano accompaniment staves for measures 101-104.

105

fa - ther's voice, your moth - er's hand,
fa - ther's voice, your moth - er's hand,

This musical system contains four staves. The top two staves are vocal lines with lyrics. The third staff is a treble clef staff with rests and a few notes at the end. The fourth staff is a bass clef staff with rests and a few notes at the end. Below these are piano accompaniment staves for measures 105-108.



6

109 *poco rit.* *fade to a whisper* *a tempo*
 guid - ing you back ...

poco rit. *fade to a whisper* *a tempo*
 guid - ing you back ...

poco rit. *fade to a whisper* *a tempo*
 guid - ing you — back ...

poco rit. *fade to a whisper* *a tempo*
 guid - ing you — back ...

poco rit. *pp a tempo*

114 *rit.* **Slower, simply** *p*
 guid - ing you back to shore.

rit. *p*
 guid - ing you back to shore.

rit. *p*
 guid - ing you — back to shore.

rit. *p*
 guid - ing you — back to shore.

Slower, simply *rit.* *p*